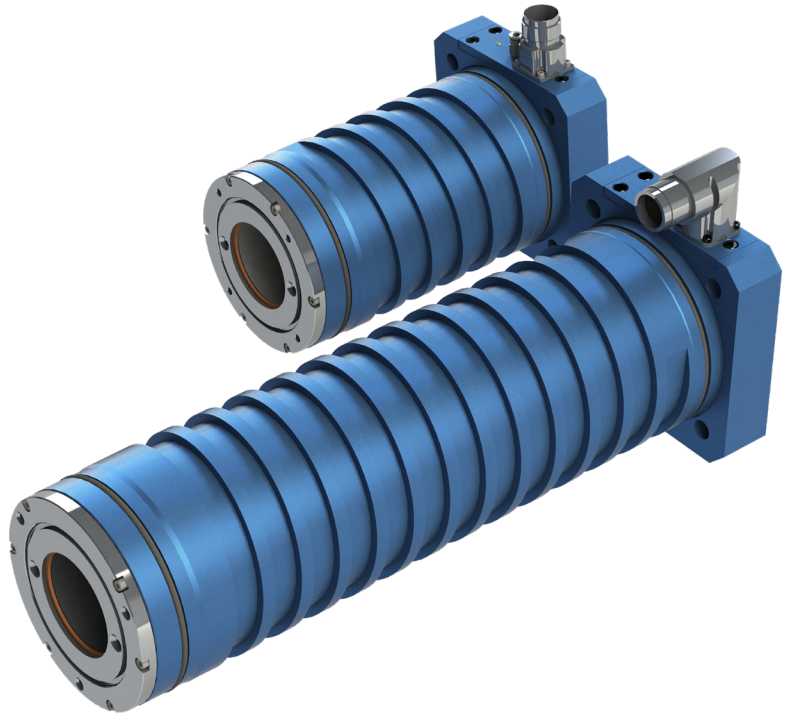


LINX[®] S-SERIES

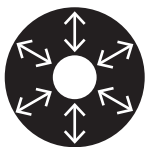
High Precision Motion Systems

AT A GLANCE

- ▶ Designed for machine tools
- ▶ Continuous force range of 335N to 630N
- ▶ Peak force up to 4,270N
- ▶ Efficient fluid-cooling thermal barrier
- ▶ No backlash or reversal errors
- ▶ Superior position performance



THE LINX[®] RANGE



Zero net attractive forces improve efficiency with no down force, extending machine life.



LINX[®] IS BETTER

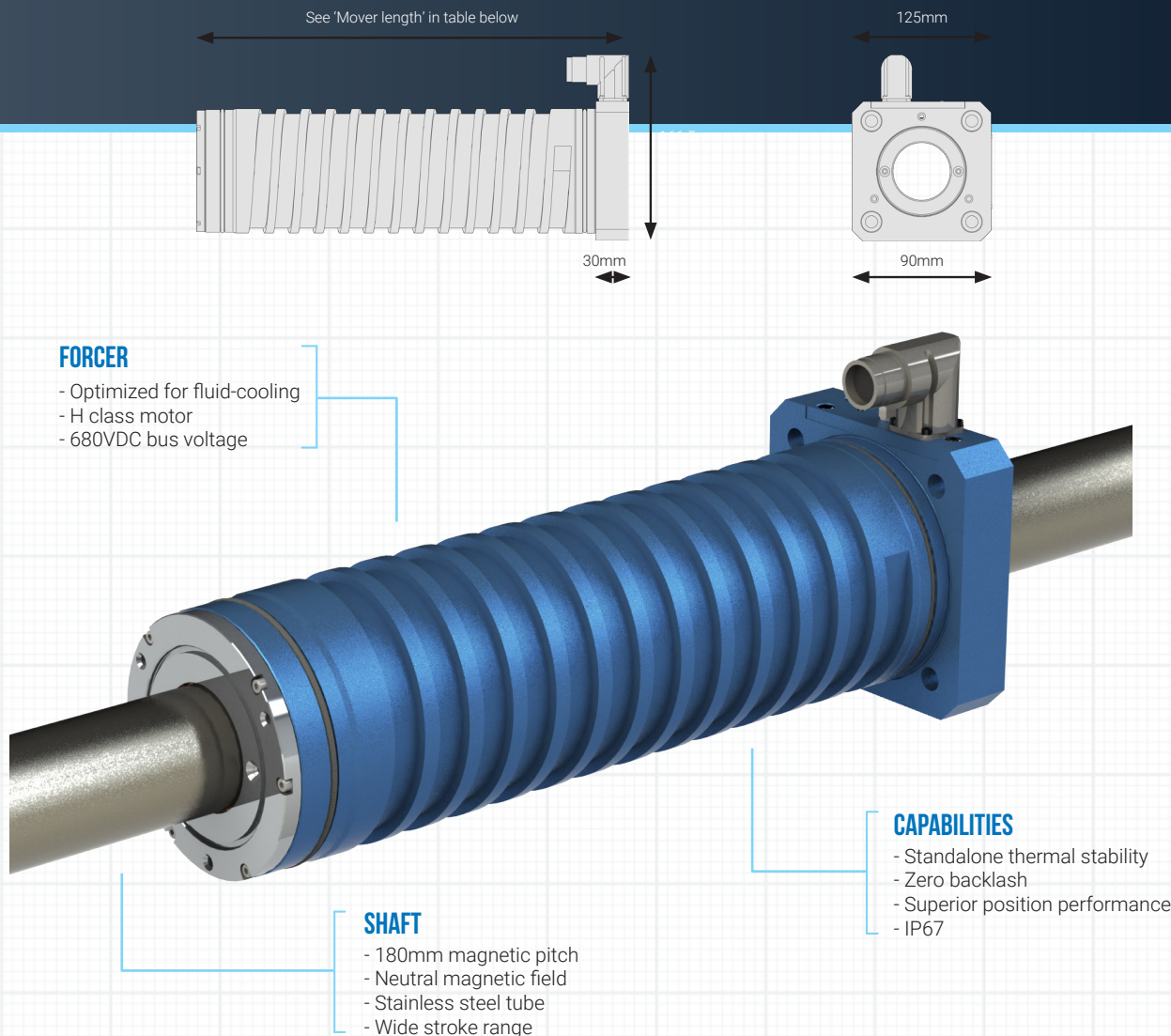
Our cylindrical linear motor design provides improved performance at a lower cost when compared to conventional flat linear and rotary motors.

FIT YOUR APPLICATION

The LinX[®] linear motor range are available in a variety of different sizes to allow for application specific solutions.

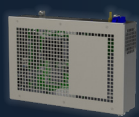
PROTECTION IS KEY

The motors are fully sealed rated to IP67, or IP69K, ensuring they are perfect for machine tool and food processing systems.

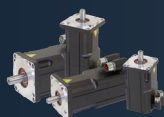


Product Code	Mover Length (mm)	Shaft OD (mm)	Continuous Force (N)*	Peak Force (N)	Continuous Current (ARMS)	Peak Current (A)	Resistance 25° C (Ω)	Inductance (mH)	Force Constant (N/ARMS)	Weight (kg)
TLMS-18P0	210	51	335	2136	3.9	24.6	10.4	29.0	87	6.5
TLMS-27P0	300	51	510	3204	5.9	36.8	6.9	19.3	87	8.8
TLMS-36P0	390	51	630	4272	7.2	49.1	5.2	14.5	87	11.4
TLMS-36H0	390	51	630	2860	3.6	16.4	20.8	58.0	174	11.4

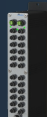
ALL SPECIFICATIONS ARE FOR REFERENCE ONLY. SPECIFICATIONS ARE SUBJECT TO CHANGE WITHOUT NOTICE.
*SPECIFIED UNDER LIQUID COOLING CONDITIONS.



CNC



MOTORS



IO DEVICES



USER INTERFACES



SOFTWARE



SERVO DRIVES