

## LINX<sup>®</sup> S-SERIES

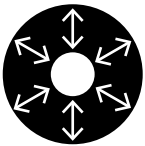
High Precision Motion Systems

### AT A GLANCE

- ▶ Designed for machine tools
- ▶ Continuous force range of 335N to 630N
- ▶ Peak force up to 4,270N
- ▶ Efficient fluid-cooling thermal barrier
- ▶ No backlash or reversal errors
- ▶ Superior position performance



### THE LINX<sup>®</sup> RANGE



Zero net attractive forces improve efficiency with no down force, extending machine life.



### LINX<sup>®</sup> IS BETTER

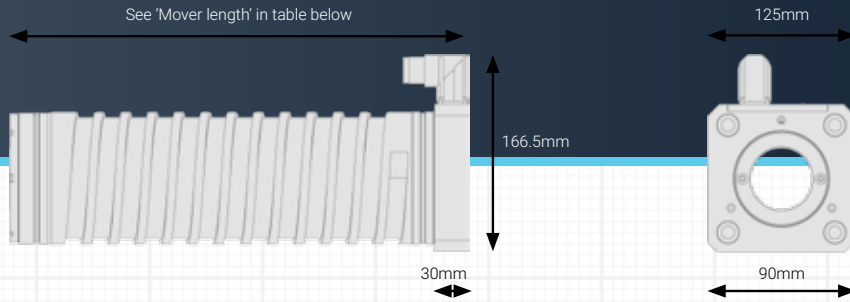
Our cylindrical linear motor design provides improved performance at a lower cost when compared to conventional flat linear and rotary motors.

### FIT YOUR APPLICATION

The LinX<sup>®</sup> linear motor range are available in a variety of different sizes to allow for application specific solutions.

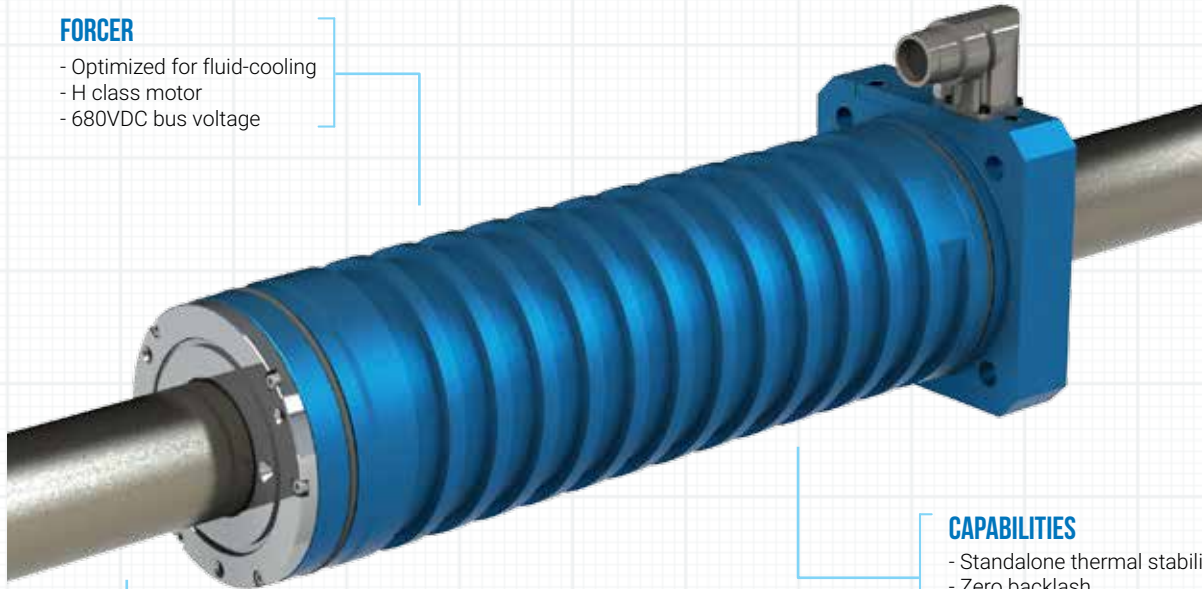
### PROTECTION IS KEY

The motors are fully sealed rated to IP67, or IP69K, ensuring they are perfect for machine tool and food processing systems.



### FORCER

- Optimized for fluid-cooling
- H class motor
- 680VDC bus voltage



### SHAFT

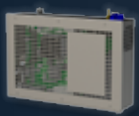
- 180mm magnetic pitch
- Neutral magnetic field
- Stainless steel tube
- Wide stroke range

### CAPABILITIES

- Standalone thermal stability
- Zero backlash
- Superior position performance
- IP67

Product Code	Mover Length (mm)	Shaft OD (mm)	Continuous Force (N)*	Peak Force (N)	Continuous Current (ARMS)	Peak Current (A)	Resistance 25° C (Ω)	Inductance (mH)	Force Constant (N/ARMS)	Weight (kg)
TLMS-18P0	210	51	335	2136	3.9	24.6	10.4	29.0	87	6.5
TLMS-27P0	300	51	510	3204	5.9	36.8	6.9	19.3	87	8.8
TLMS-36P0	390	51	630	4272	7.2	49.1	5.2	14.5	87	11.4
TLMS-36H0	390	51	630	2860	3.6	16.4	20.8	58.0	174	11.4

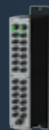
ALL SPECIFICATIONS ARE FOR REFERENCE ONLY. SPECIFICATIONS ARE SUBJECT TO CHANGE WITHOUT NOTICE.  
\*SPECIFIED UNDER LIQUID COOLING CONDITIONS.



CNC



MOTORS



IO DEVICES



USER INTERFACES



SOFTWARE



SERVO DRIVES