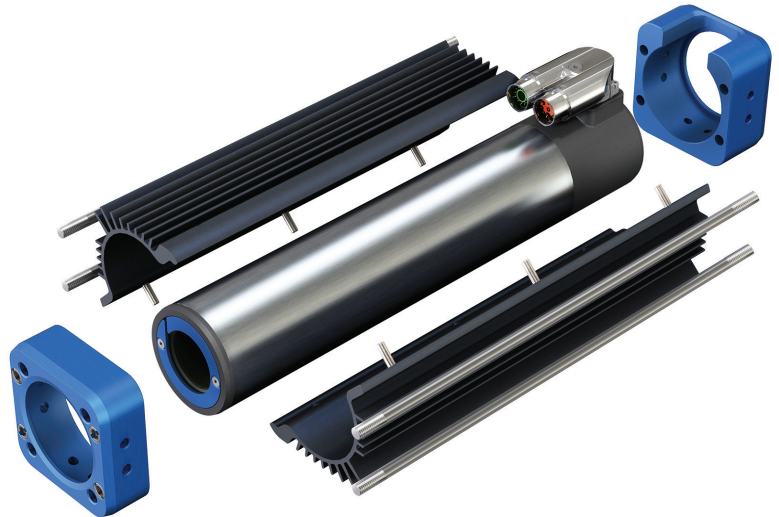


LINX[®] M-SERIES

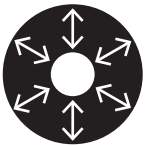
Tubular linear motors for highly dynamic motion systems

AT A GLANCE

- ▶ Highly dynamic
- ▶ Continuous force range of 80N to 287N
- ▶ Peak force up to 1,200N
- ▶ Modular heatsink
- ▶ Integrated position feedback
- ▶ Pneumatics retrofit friendly



THE LINX[®] RANGE



Zero net attractive forces improve efficiency with no down force, extending machine life.



LINX[®] IS BETTER

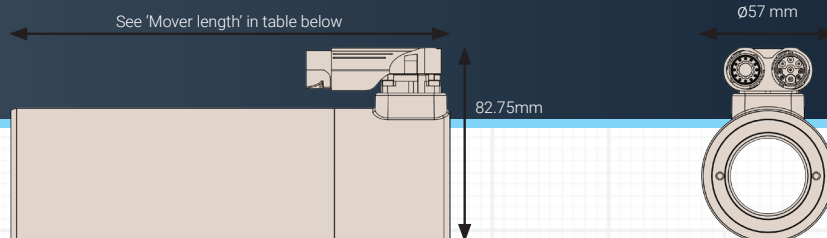
Our cylindrical linear motor design provides improved performance at a lower cost when compared to conventional flat linear and rotary motors.

FIT YOUR APPLICATION

The LinX[®] linear motor range are available in a variety of different sizes to allow for application specific solutions.

PROTECTION IS KEY

The motors are fully sealed rated to IP66, ensuring they are perfect for automation, machine tool, and food processing systems.



INTEGRATED POSITION FEEDBACK

- Absolute accuracy to $\pm 0.5\text{mm}$
- Resolution: $10\mu\text{m}$

FORCER

- Compacted sizes
- Modular heatsink
- 600VDC bus voltage

CAPABILITIES

- High speed
- High acceleration
- Pneumatics retrofit friendly
- IP66

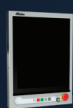
SHAFT

- 50mm magnetic pitch
- Neutral magnetic field
- Stainless steel tube
- Wide stroke range

Product Code	Mover Length (mm)	Shaft OD (mm)	Continuous Force (N)*	Peak Force (N)	Continuous Current (A _{RMS})	Peak Current (A)	Resistance 25° C (Ω)	Inductance (mH)	Force Constant (N/A _{RMS})	Weight (kg)
TLMM-15P0	221	30	80	643	2.16	15.7	6.05	5.77	41	1.6
TLMM-15H0	221	30	80	643	1.09	7.85	24.2	23.1	82	1.6
TLMM-22P0	296	30	120	965	3.25	23.6	4.03	3.85	41	2.3
TLMM-30P0	371	30	155	1287	4.2	31.4	3.02	2.88	41	3.0
TLMM-30H0	371	30	155	1287	2.09	15.7	12.08	11.52	82	3.0

ALL SPECIFICATIONS ARE FOR REFERENCE ONLY. SPECIFICATIONS ARE SUBJECT TO CHANGE WITHOUT NOTICE.

* CONTINUOUS FORCE IS SPECIFIED UNDER NATURAL CONVECTION WITH HEATSINK. THIS CAN BE IMPROVED UNDER FORCED AIR COOLING OR FLUID COOLING CONDITIONS.



TOUCHPAD



PENDANT



SOFTWARE



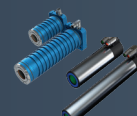
CNC



DRIVES



GAMMA MOTORS



LINX® MOTORS

ANCA
motion
Motion Control Solutions
www.ancamotion.com



20200806

© 2021 by ANCA Motion. All rights reserved.
We reserve the right to technical changes.