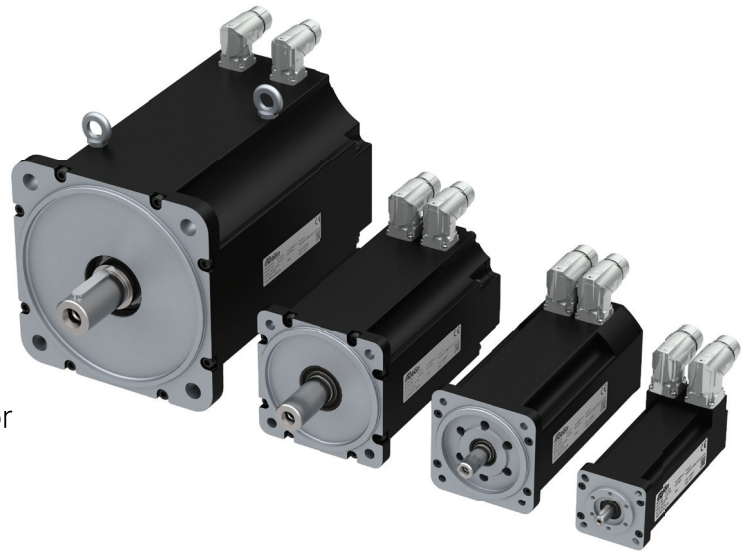


GAMMA SERIES

AC synchronous servo motors for increased performance

AT A GLANCE

- ▶ High performance in demanding applications
- ▶ High resolution encoder feedback
- ▶ Fully enclosed frame with IP65 protection
- ▶ Permanent Magnet AC servo motors
- ▶ Optional integrated brake and temperature sensor



Robust performance for the toughest of conditions.

SMOOTH MOTION

The Gamma series AC synchronous servomotors have a three-phase distributed stator windings and permanent magnets on the rotor. The winding is designed for sinusoidal current and voltage.

IMPROVED PERFORMANCE

High torque and high power is synonymous with the Gamma motor range and is achieved by improving escape of heat from the stator to the front flange and by optimized magnetic circuit.

VERSATILE RANGE

The Gamma series can increase the ratio of torque to the dimensions of motor and expand usage of the motors to a wide array of applications.

RANGE

- Torque: 0.5-80Nm
- Speed: 2000 – 6000rpm
- Power: 0.15-13.8KW
- Flange size: 58-190mm

MECHANICAL

- Swivel connector
- IP65 protection
- Class F insulation

OPTIONS

- 400Vac/230Vac input
- Brake
- Keyed shaft
- Digital incremental encoder
- Forced cooling

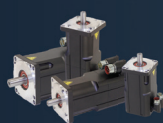
PERFORMANCE

- Low cogging
- High precision position feedback
- High quality rare earth permanent magnets

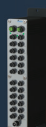
NOTE: REFER TO GAMMA MOTOR CATALOGUE FOR SELECTION GUIDE AND SPECIFICATIONS



CNC



MOTORS



IO DEVICES



USER INTERFACES



SOFTWARE



SERVO DRIVES