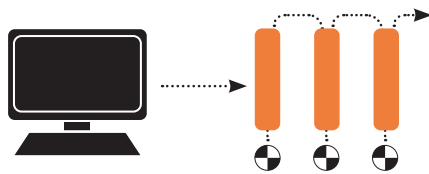


## AMD2000 SERIES

Powerful, stand alone motion control

### AT A GLANCE

- ▶ Wide input range from 100V to 240V, single or 3 phase
- ▶ High efficiency control for rotary and linear motors
- ▶ Industry leading EtherCAT® fieldbus
- ▶ Field upgradeable firmware
- ▶ Rich on-drive I/Os
- ▶ Both 3A and 9A drives available with STO



Run high speed, high bandwidth,  
multi-axis systems with **EtherCAT®**



### SIMPLE AND EASY

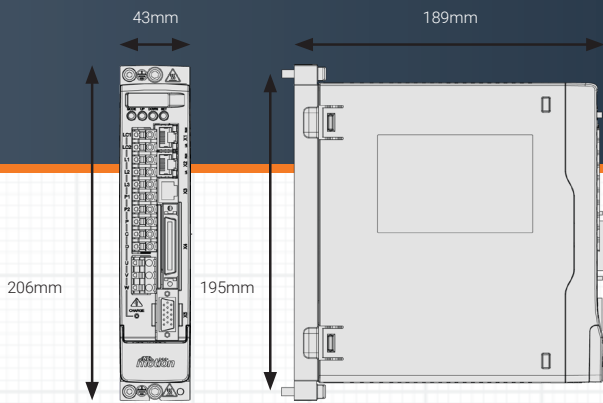
ANCA MotionBench configuration software guides you through system setup in clear and concise steps.

### EVERYTHING ON-BOARD

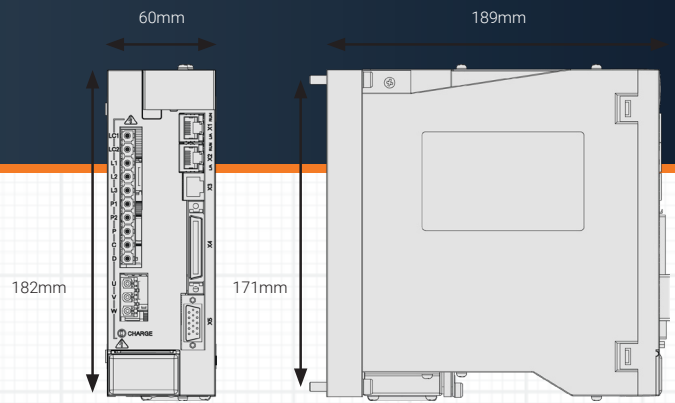
Plug and play direct from mains power with a built in 24V power supply. A stand alone solution for both rotary and linear motor control systems.

### OPTIMISE YOUR SYSTEM

Customise detailed drive configuration and tuning parameters for unique applications. Stay ahead with field upgradeable firmware.



3A Drive



9A Drive

**INTERACTION**

- LED Display
- 4x Buttons

**DIGITAL I/O SUPPLY**

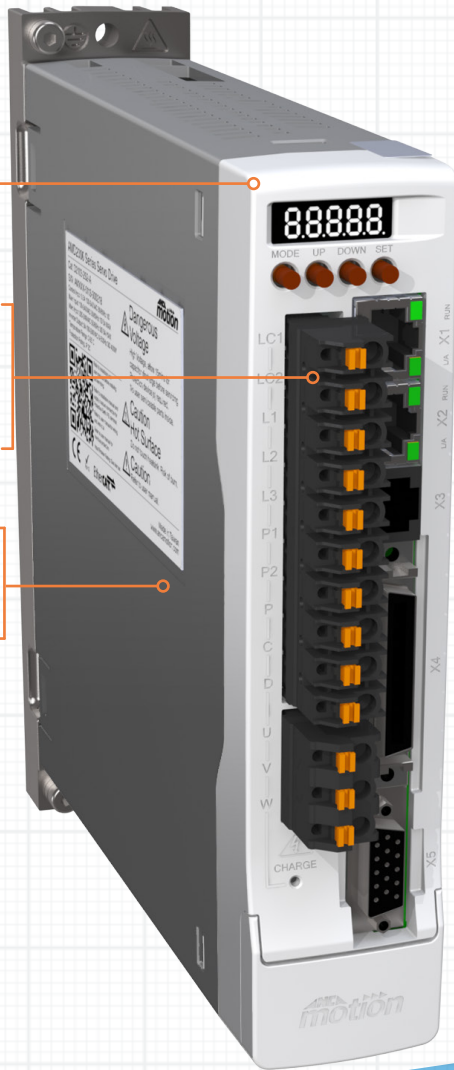
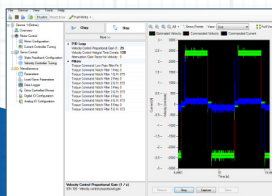
- Mains 100-240VAC input
- In-built 24VDC power supply
- 50/60Hz input
- 3A, 9A or 15A continuous output current

**CONTROL**

- Linear and rotational motors
- Position, velocity and torque control
- Thermal and over-current protection

**SPECIAL FEATURES**

- >90% efficiency at load
- Field upgradeable firmware
- Safe Torque Off IEC 61800-5-2 (opt.)
- MotionBench configuration software
- In-built brake resistor



**COMMUNICATION**

- 100Mbps
- EtherCAT® fieldbus
- Ethernet RJ-45

**DIGITAL INPUT**

- 8x 24V isolated inputs
- 2x RS422 inputs
- 24VDC nominal

**DIGITAL OUTPUT**

- 6x 24V isolated outputs
- 3x RS422 outputs

**ANALOGUE INPUT**

- 2 inputs
- ±10V nominal

**ANALOGUE OUTPUT**

- 2 output
- ±10V nominal

**MOTOR INTERFACE**

- 2 motor position feedback
- Analogue incremental encoder
- Digital incremental encoder



TOUCHPAD



PENDANT



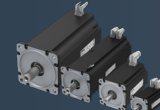
SOFTWARE



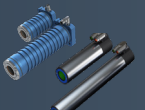
CNC



DRIVES



GAMMA MOTORS



LINX® MOTORS