

## ALPHA SERIES

Low noise, high compatibility motion systems

### AT A GLANCE

- ▶ Permanent magnet AC servo motors from 100-2000W
- ▶ Vibration free performance at nominal torque
- ▶ Highly compatible incremental digital encoder
- ▶ Fully enclosed frame with IP67 rating
- ▶ Very low cogging torques
- ▶ Integrated brake option



Cost effective motion solution available  
in a range of industry standard sizes.

### WIDE POWER RANGE

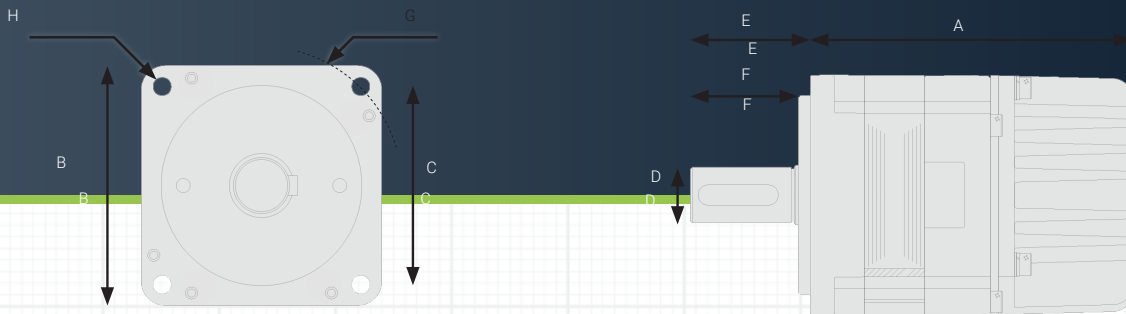
Motor inertia and electrical performance are designed to suit a wide range of applications.

### SMOOTH OPERATION

Alpha Series motors deliver low noise and vibration free performance at nominal torque in most demanding applications.

### INDUSTRY STANDARD

Incremental digital encoders are used to ensure compatibility with most industrial servo drives.



### MECHANICAL SPECIFICATIONS

Product Code	A (mm)	B (mm)	C (mm)	D (mm)	E (mm)	F (mm)	G (mm)	H (mm)	Weight (kg)	IP Rating*1	Insulation Grade	Connector Style
MAX40-0330-A	98.2	40	30	8	25	22.5	46	4.5	0.48	IP67	F (155°C)	AMP
MAX40-0330-AB	131.3	40	30	8	25	22.5	46	4.5	0.7	IP67	F (155°C)	AMP
MAX60-0630-A	101	60	50	14	30	27	70	5.5	1	IP67	F (155°C)	AMP
MAX60-0630-AB	139.5	60	50	14	30	27	70	5.5	1.4	IP67	F (155°C)	AMP
MAX60-1330-A	123	60	50	14	30	27	70	5.5	1.37	IP67	F (155°C)	AMP
MAX60-1330-AB	161.5	60	50	14	30	27	70	5.5	1.87	IP67	F (155°C)	AMP
MAX80-2430-A	122.2	80	70	19	40	37	90	6.5	2.4	IP67	F (155°C)	AMP
MAX80-2430-AB	174	80	70	19	40	37	90	6.5	3.8	IP67	F (155°C)	AMP
MA86-2430-A	146	86	80	16	35	32	100	6.5	3.41	IP67	F (155°C)	AMP
MA86-2430-AB	183.2	86	80	16	35	32	100	6.5	4.06	IP67	F (155°C)	AMP
MA130-5310-A	164.8	130.4	110	22	58	52	145	9	6.47	IP67	B (130°C)	MS
MA130-5310-AB	219.3	130.4	110	22	58	52	145	9	7.57	IP67	B (130°C)	MS
MA130-4830-A	164.8	130.4	110	22	58	52	145	9	6.47	IP67	B (130°C)	MS
MA130-4830-AB	219.3	130.4	110	22	58	52	145	9	7.57	IP67	B (130°C)	MS
MA130-7220-A	183.8	130.4	110	22	58	52	145	9	8.08	IP67	B (130°C)	MS
MA130-7220-AB	238.3	130.4	110	22	58	52	145	9	9.18	IP67	B (130°C)	MS
MA130-9620-A	214.8	130.4	110	22	58	52	145	9	10.18	IP67	B (130°C)	MS
MA130-9620-AB	269.3	130.4	110	22	58	52	145	9	11.28	IP67	B (130°C)	MS

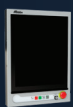
### ELECTRICAL SPECIFICATIONS

Product Code	Rated Torque (Nm)	Rated Speed (rpm)	Rated Power (W)	Rated Current (A)	Torque Constant (Nm/A)	Voltage Constant (V/krpm)	Max Current (A)	Max Speed 300 VDC bus (rpm)	Rotor Inertia (kg.cm2)	Stator Resistance (Ω)	Stator Inductance (mH)	Motor Poles
MAX40-0330-A (AB)	0.32	3000	100	0.9	0.36	23.7	2.7	6000	0.041 (0.047)	25.4	26.4	8
MAX60-630-A (AB)	0.64	3000	200	1.6	0.46	28	4.8	6000	0.17 (0.23)	6.4	16.2	8
MAX60-1330-A (AB)	1.27	3000	400	2.6	0.49	32.8	8.1	6000	0.28 (0.34)	3.15	11	8
MAX80-2430-A (AB)	2.39	3000	750	4.3	0.56	37.3	14	5000	0.9 (1.03)	1.48	10.1	8
MA86-2430-A (AB)	2.39	3000	750	3.4	0.78	54.3	10.2	5000	2.45 (2.45)	2.18	7.7	8
MA130-5310-A (AB)	5.25	1000	550	3.43	1.68	117.3	10.3	2000	6.26 (6.58)	3.58	18.33	8
MA130-4830-A (AB)	4.78	3000	1500	7.06	0.74	51.7	21.2	5000	6.26 (6.58)	0.65	3.58	8
MA130-7220-A (AB)	7.16	2000	1500	7.57	1.06	72.5	22.71	4000	8.88 (9.20)	0.79	4.74	8
MA130-9620-A (AB)	9.55	2000	2000	9.18	1.14	79.6	27.5	3500	12.14 (12.46)	0.58	3.78	8

### BRAKE MOTOR SPECIFIC INFORMATION

Order Code	Brake Voltage (Vdc)	Brake Current (A)	Brake Active Time (ms)	Brake Release Time (ms)	Weight (kg)	Rotor Inertia (kg/cm2)	Static Friction Torque (Nm)	Connector Type
MAX40-xxxx-AB	24	0.268	< 20	< 50	0.22	0.006	> 0.35	N
MAX60-xxxx-AB	24	0.32	< 20	< 50	0.4	0.049	> 2	N
MAX80-xxxx-AB	24	0.32	< 20	< 50	1.4	0.129	> 2	N
MA86-2430-AB	24	0.43	< 35	< 50	0.65	0.129	> 3	N
MA130-xxxx-AB	24	0.515	< 20	< 50	1.1	0.324	> 3	C

N: Flying Lead (no connector)  
C: MS Connector



TOUCHPAD



PENDANT



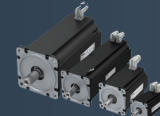
SOFTWARE



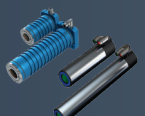
CNC



DRIVES



GAMMA MOTORS



LINX® MOTORS

**ANCA**  
**motion**  
Motion Control Solutions  
www.ancamotion.com

